



PRINCE SHRI VENKATESWARA ARTS AND SCIENCE COLLEGE

Gowrivaklam, Chennai-600073.

Affiliated to University of Madras, ISO 9001:2015 Certified Institution.

ALUMNI FEEDBACK ON CURRICULUM, INFRASTRUCTURE FACILITIES & AMBIENCE OF THE INSTITUTION – ANALYSIS REPORT

Academic Year **2019-20**
 Department **B.Sc. Biochemistry**
 Number of Respondents **47**

Feedback Rate: Strongly Agree (5), Agree (4), Neutral (3), Disagree (2), Strongly Disagree (1)

S. No	Feedback on Curriculum, infrastructure facilities & ambience of the institution	5	4	3	2	1
1	Rate the appropriateness of curriculum and syllabus content for placement/ higher education. (Related to curriculum)	36	9	2	0	0
2	Rate the effectiveness of the academic curriculum for the development of analytical and problem-solving skills (Related to curriculum)	41	5	1	0	0
3	Rate the curriculum and institution activities for making the students industry ready at the end of the programme (Related to curriculum)	32	14	1	0	0
4	Rate the curriculum for the improvement of creative thinking skills and knowledge / scope of the syllabus in enhancing entrepreneurship skills/ lifelong learning/ human values and ethics. (Related to Academic Performance)	36	6	5	0	0
5	Rate the faculty and the teaching learning process in the department and institution (Related to curriculum and academic performance)	35	9	3	0	0



PRINCE SHRI VENKATESWARA ARTS AND SCIENCE COLLEGE

Gowrivakkam, Chennai-600073.

Affiliated to University of Madras, ISO 9001:2015 Certified Institution.

6	Rate the placement opportunities and career guidance programs provided by the Placement Cell (Related to academic performance)	33	10	3	0	1
7	Rate the laboratory facilities and the laboratory course experiments relevancy to real time applications (Related to infrastructure and ambience of the institution)	36	9	2	0	0
8	Rate the adequacy of library and research Centre facilities (Related to infrastructure of the institution)	41	5	1	0	0
9	Rate the sports and cultural facilities and the related activities by the institution (Related to infrastructure and ambience of the institution)	36	5	6	0	0
10	Rate the opportunities provided by the institute to participate in co-curricular and extracurricular activities (Related to ambience of the institution)	40	6	0	1	0
11	Rate the conducive and peaceful overall environment provided by the institution (Related to ambience of the institution)	38	7	2	0	0



B. Kalpana
PRINCIPAL
PRINCE SHRI VENKATESHWARA
ARTS AND SCIENCE COLLEGE
GOWRIVAKKAM, CHENNAI-600 073.



PRINCE SHRI VENKATESWARA ARTS AND SCIENCE COLLEGE

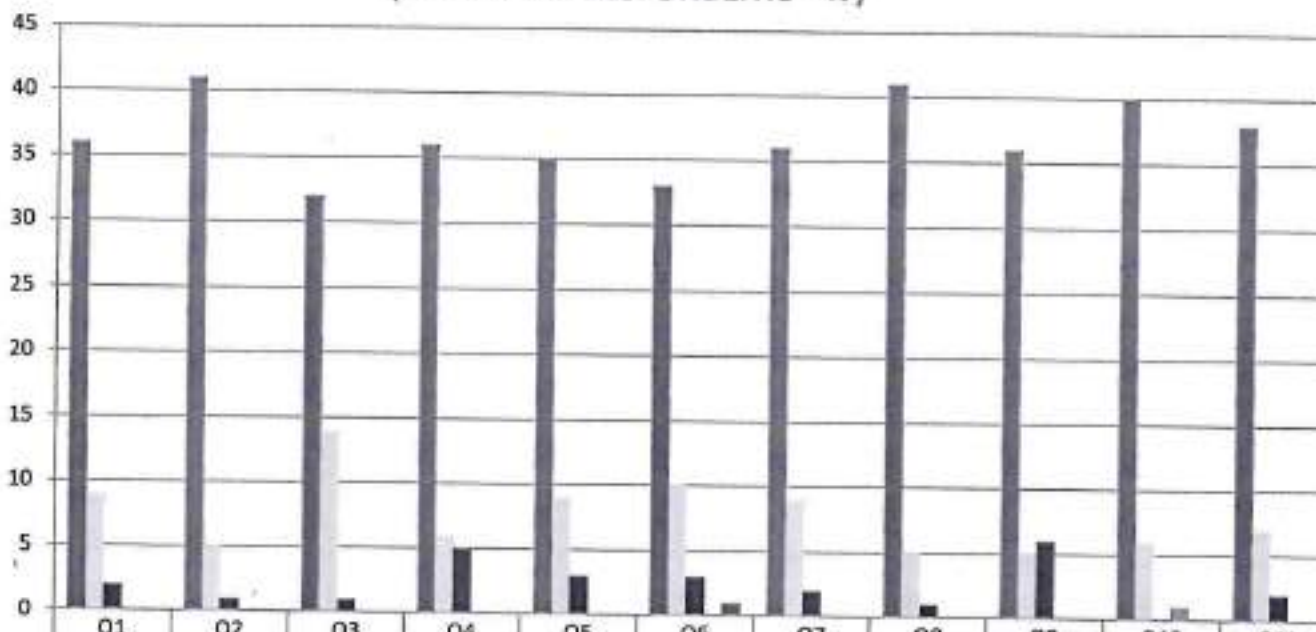
Gowrivakkam, Chennai-600073.

Affiliated to University of Madras, ISO 9001:2015 Certified Institution.

**ALUMNI FEEDBACK ON CURRICULUM, INFRASTRUCTURE
FACILITIES & AMBIENCE OF THE INSTITUTION - 2019-2020**

B.Sc. BIOCHEMISTRY

(NUMBER OF RESPONDENTS - 47)



B. Kalpana
PRINCIPAL
PRINCE SHRI VENKATESHWARA
ARTS AND SCIENCE COLLEGE
GOWRIVAKKAM, CHENNAI-600 073.



PRINCE SHRI VENKATESWARA ARTS AND SCIENCE COLLEGE

Gowrivaldam, Chennai-600073

Affiliated to University of Madras, ISO 9001:2015 Certified Institution

ALUMNI FEEDBACK ON CURRICULUM, INFRASTRUCTURE FACILITIES & AMBIENCE OF THE INSTITUTION – ANALYSIS REPORT

Academic Year

2019-20

Department

B.Sc.-Microbiology

Number of Respondents

50

Feedback Rate: Strongly Agree (5), Agree (4), Neutral (3), Disagree (2), Strongly Disagree (1)

S. No	Feedback on Curriculum, infrastructure facilities & ambience of the institution	5	4	3	2	1
1	Rate the appropriateness of curriculum and syllabus content for placement/ higher education. (Related to curriculum)	37	10	3	0	0
2	Rate the effectiveness of the academic curriculum for the development of analytical and problem-solving skills (Related to curriculum)	34	14	2	0	0
3	Rate the curriculum and institution activities for making the students industry ready at the end of the programme (Related to curriculum)	36	11	2	1	0
4	Rate the curriculum for the improvement of creative thinking skills and knowledge / scope of the syllabus in enhancing entrepreneurship skills/ lifelong learning/ human values and ethics. (Related to Academic Performance)	33	15	2	0	0
5	Rate the faculty and the teaching learning process in the department and institution (Related to curriculum and academic performance)	36	12	2	0	0
6	Rate the placement opportunities and career guidance programs provided by the Placement Cell (Related to academic performance)	36	10	3	0	1



PRINCE SHRI VENKATESWARA ARTS AND SCIENCE COLLEGE

Gowrivakkam, Chennai-600073.

Affiliated to University of Madras, ISO 9001:2015 Certified Institution.

7	Rate the laboratory facilities and the laboratory course experiments relevancy to real time applications (Related to infrastructure and ambience of the institution)	32	15	3	0	0
8	Rate the adequacy of library and research Centre facilities (Related to infrastructure of the institution)	36	11	2	1	0
9	Rate the sports and cultural facilities and the related activities by the institution (Related to infrastructure and ambience of the institution)	34	14	2	0	0
10	Rate the opportunities provided by the institute to participate in co-curricular and extracurricular activities (Related to ambience of the institution)	35	13	2	0	0
11	Rate the conducive and peaceful overall environment provided by the institution (Related to ambience of the institution)	37	10	3	0	0



B. Kalpana

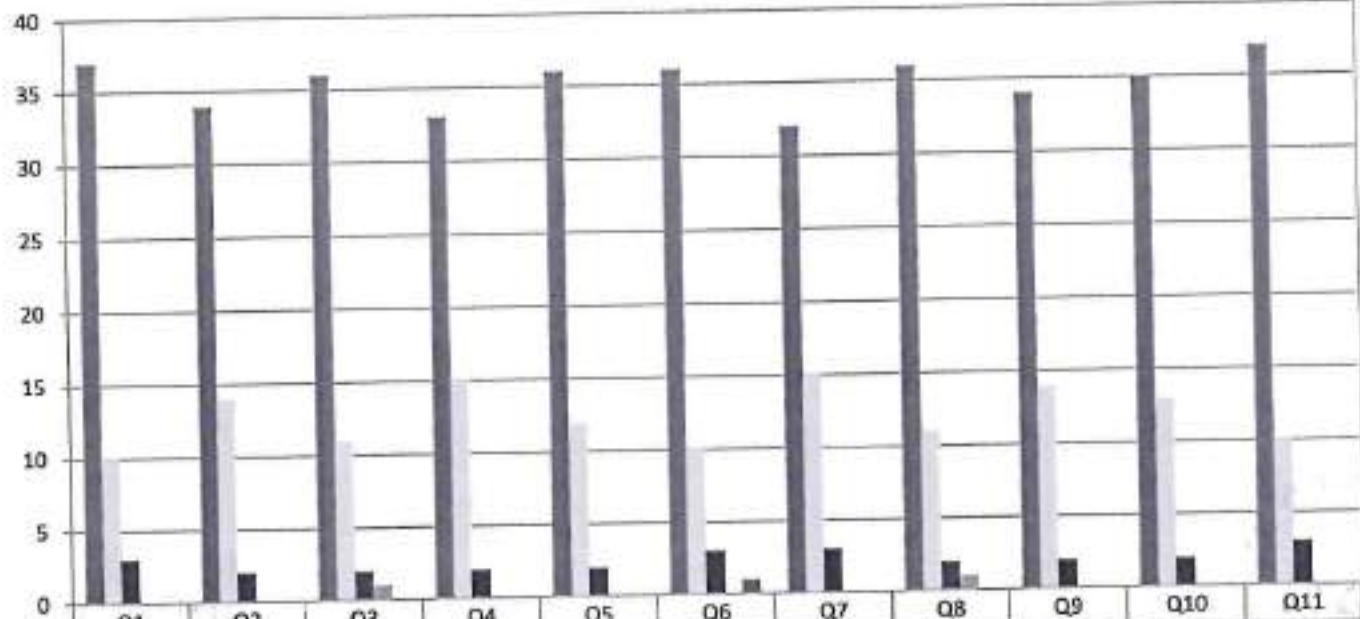
PRINCIPAL

**PRINCE SHRI VENKATESHWARA
ARTS AND SCIENCE COLLEGE
GOWRIVAKKAM, CHENNAI-600 073.**



PRINCE SHRI VENKATESWARA ARTS AND SCIENCE COLLEGE
 Gowrivalckam, Chennai-600073.
 Affiliated to University of Madras, ISO 9001:2015 Certified Institution

**ALUMNI FEEDBACK ON CURRICULUM, INFRASTRUCTURE
 FACILITIES & AMBIENCE OF THE INSTITUTION - 2019-2020**
B.Sc. MICROBIOLOGY
 (NUMBER OF RESPONDENTS - 50)



B. Kalpana
PRINCIPAL
 PRINCE SHRI VENKATESHWARA
 ARTS AND SCIENCE COLLEGE
 CHENNAI



PRINCE SHRI VENKATESWARA ARTS AND SCIENCE COLLEGE

Gowrivakkam, Chennai-600073.

Affiliated to University of Madras. ISO 9001:2015 Certified Institution

**ALUMNI FEEDBACK ON CURRICULUM, INFRASTRUCTURE FACILITIES & AMBIENCE OF THE
INSTITUTION – ANALYSIS REPORT**

Academic Year

2019-20

Department

B.Sc. Electronics and Communication Science

Number of Respondents

10

Feedback Rate: Strongly Agree (5), Agree (4), Neutral (3), Disagree (2), Strongly Disagree (1)

S. No	Feedback on Curriculum, infrastructure facilities & ambience of the institution	5	4	3	2	1
1	Rate the appropriateness of curriculum and syllabus content for placement/ higher education. (Related to curriculum)	8	1	1	0	0
2	Rate the effectiveness of the academic curriculum for the development of analytical and problem-solving skills (Related to curriculum)	6	2	2	0	0
3	Rate the curriculum and institution activities for making the students industry ready at the end of the programme (Related to curriculum)	7	0	2	1	0
4	Rate the curriculum for the improvement of creative thinking skills and knowledge / scope of the syllabus in enhancing entrepreneurship skills/ lifelong learning/ human values and ethics. (Related to Academic Performance)	6	3	1	0	0
5	Rate the faculty and the teaching learning process in the department and institution (Related to curriculum and academic performance)	8	1	1	0	0



PRINCE SHRI VENKATESWARA ARTS AND SCIENCE COLLEGE

Gowrivakkam, Chennai-600073.

Affiliated to University of Madras, ISO 9001:2015 Certified Institution.

6	Rate the placement opportunities and career guidance programs provided by the Placement Cell (Related to academic performance)	8	0	1	0	1
7	Rate the laboratory facilities and the laboratory course experiments relevancy to real time applications (Related to infrastructure and ambience of the institution)	7	2	1	0	0
8	Rate the adequacy of library and research Centre facilities (Related to infrastructure of the institution)	8	1	0	1	0
9	Rate the sports and cultural facilities and the related activities by the institution (Related to infrastructure and ambience of the institution)	8	2	0	0	0
10	Rate the opportunities provided by the institute to participate in co-curricular and extracurricular activities (Related to ambience of the institution)	7	2	1	0	0
11	Rate the conducive and peaceful overall environment provided by the institution (Related to ambience of the institution)	8	1	1	0	0



B. Kalpana
PRINCIPAL
PRINCE SHRI VENKATESHWARA
ARTS AND SCIENCE COLLEGE
GOWRIVAKKAM, CHENNAI-600 073.



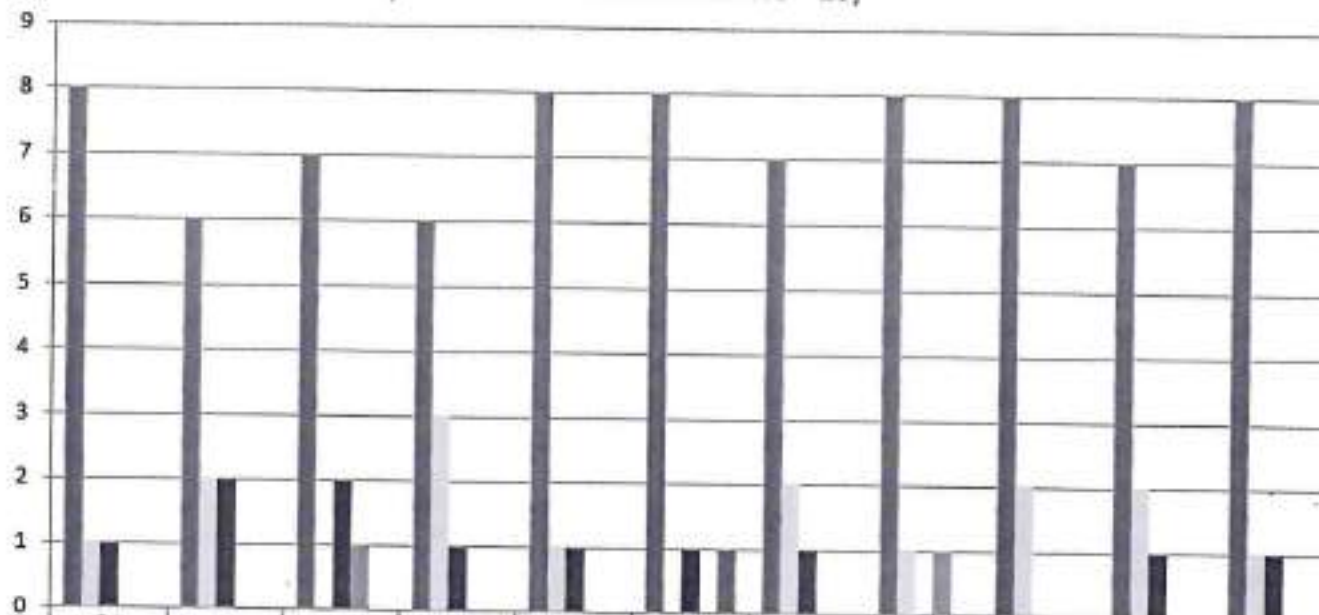
PRINCE SHRI VENKATESWARA ARTS AND SCIENCE COLLEGE

Gowrivakkam, Chennai-600073.

Affiliated to University of Madras, ISO 9001:2015 Certified Institution.

**ALUMNI FEEDBACK ON CURRICULUM, INFRASTRUCTURE
FACILITIES & AMBIENCE OF THE INSTITUTION - 2019-2020
B.Sc. ELECTRONICS AND COMMUNICATION SCIENCE**

(NUMBER OF RESPONDENTS - 10)



	Q1	Q2	Q3	Q4	Q5	Q6	Q7	Q8	Q9	Q10	Q11
Strongly Agree (5)	8	6	7	6	8	8	7	8	8	7	8
Agree (4)	1	2	0	3	1	0	2	1	2	2	1
Neutral (3)	1	2	2	1	1	1	1	0	0	1	1
Disagree (2)	0	0	1	0	0	0	0	1	0	0	0
Strongly Disagree (1)	0	0	0	0	0	1	0	0	0	0	0



B. Kalpana
PRINCIPAL
PRINCE SHRI VENKATESHWARA
ARTS AND SCIENCE COLLEGE
GOWRIVAKKAM CHENNAI-600 073.



PRINCE SHRI VENKATESWARA ARTS AND SCIENCE COLLEGE

Gowrivaldam, Chennai-600073.

Affiliated to University of Madras. ISO 9001:2015 Certified Institution

ALUMNI FEEDBACK ON CURRICULUM, INFRASTRUCTURE FACILITIES & AMBIENCE OF THE INSTITUTION – ANALYSIS REPORT

Academic Year 2019-20
Department B.Sc.-Computer Science
Number of Respondents 90

Feedback Rate: Strongly Agree (5), Agree (4), Neutral (3), Disagree (2), Strongly Disagree (1)

S. No	Feedback on Curriculum, infrastructure facilities & ambience of the institution	5	4	3	2	1
1	Rate the appropriateness of curriculum and syllabus content for placement/ higher education. (Related to curriculum)	72	14	4	0	0
2	Rate the effectiveness of the academic curriculum for the development of analytical and problem-solving skills (Related to curriculum)	62	25	3	0	0
3	Rate the curriculum and institution activities for making the students industry ready at the end of the programme (Related to curriculum)	66	17	7	0	0
4	Rate the curriculum for the improvement of creative thinking skills and knowledge / scope of the syllabus in enhancing entrepreneurship skills/ lifelong learning/ human values and ethics. (Related to Academic Performance)	66	20	4	0	0
5	Rate the faculty and the teaching learning process in the department and institution (Related to curriculum and academic performance)	65	20	5	0	0



PRINCE SHRI VENKATESWARA ARTS AND SCIENCE COLLEGE

Gowrivakkam, Chennai-600073.

Affiliated to University of Madras, ISO 9001:2015 Certified Institution

6	Rate the placement opportunities and career guidance programs provided by the Placement Cell (Related to academic performance)	63	21	5	0	1
7	Rate the laboratory facilities and the laboratory course experiments relevancy to real time applications (Related to infrastructure and ambience of the institution)	66	20	4	0	0
8	Rate the adequacy of library and research Centre facilities (Related to infrastructure of the institution)	71	16	3	0	0
9	Rate the sports and cultural facilities and the related activities by the institution (Related to infrastructure and ambience of the institution)	65	17	8	0	0
10	Rate the opportunities provided by the institute to participate in co-curricular and extracurricular activities (Related to ambience of the institution)	72	14	3	1	0
11	Rate the conducive and peaceful overall environment provided by the institution (Related to ambience of the institution)	66	20	4	0	0



B. Kalpana
PRINCIPAL
PRINCE SHRI VENKATESHWARA
ARTS AND SCIENCE COLLEGE
GOWRIVAKKAM, CHENNAI-600 073.



PRINCE SHRI VENKATESWARA ARTS AND SCIENCE COLLEGE

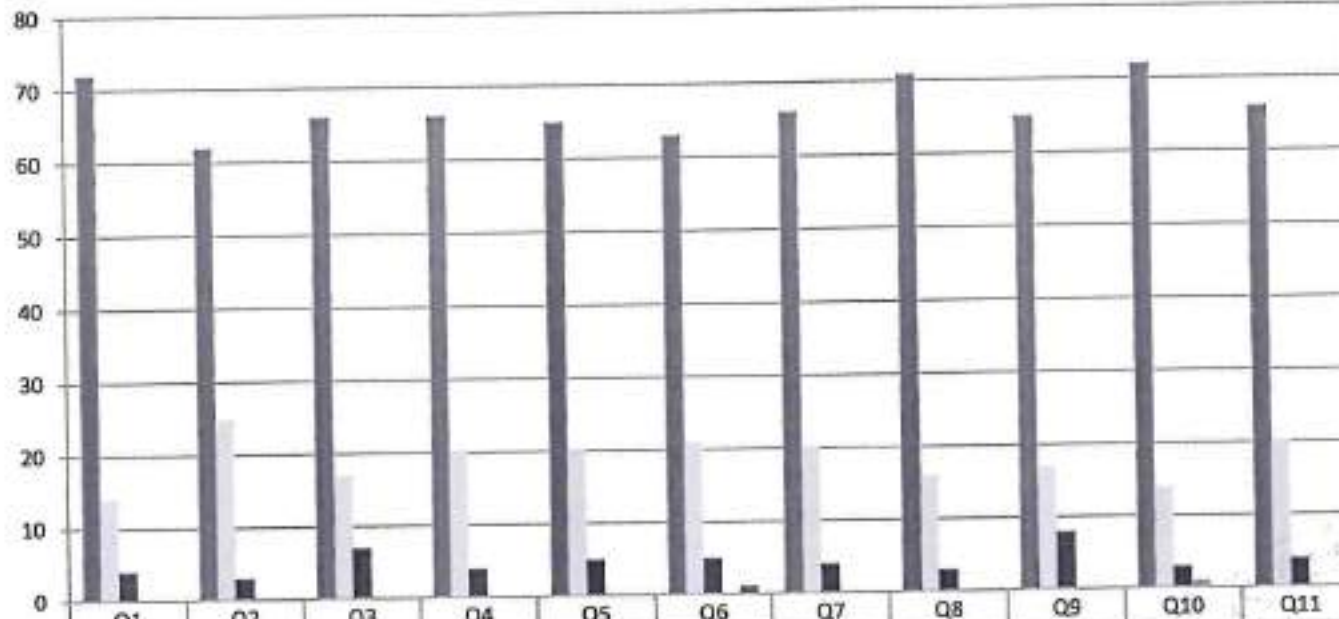
Gowrivakkam, Chennai-600073.

Affiliated to University of Madras, ISO 9001:2015 Certified Institution

ALUMNI FEEDBACK ON CURRICULUM, INFRASTRUCTURE FACILITIES & AMBIENCE OF THE INSTITUTION - 2019-2020

B.Sc. COMPUTER SCIENCE

(NUMBER OF RESPONDENTS - 90)



	Q1	Q2	Q3	Q4	Q5	Q6	Q7	Q8	Q9	Q10	Q11
Strongly Agree (5)	72	62	66	66	65	63	66	71	65	72	66
Agree (4)	14	25	17	20	20	21	20	16	17	14	20
Neutral (3)	4	3	7	4	5	5	4	3	8	3	4
Disagree (2)	0	0	0	0	0	0	0	0	0	0	0
Strongly Disagree (1)	0	0	0	0	0	1	0	0	0	0	0



B. Kalpana
PRINCIPAL

**PRINCE SHRI VENKATESHWARA
ARTS AND SCIENCE COLLEGE
GOWRIVAKKAM, CHENNAI-600 073.**



PRINCE SHRI VENKATESWARA ARTS AND SCIENCE COLLEGE

Gowrivakkam, Chennai-600073.

Affiliated to University of Madras, ISO 9001:2015 Certified Institution

ALUMNI FEEDBACK ON CURRICULUM, INFRASTRUCTURE FACILITIES & AMBIENCE OF THE INSTITUTION – ANALYSIS REPORT

Academic Year 2019-20
Department B. Com-General
Number of Respondents 115

Feedback Rate: Strongly Agree (5), Agree (4), Neutral (3), Disagree (2), Strongly Disagree (1)

S. No	Feedback on Curriculum, infrastructure facilities & ambience of the institution	5	4	3	2	1
1	Rate the appropriateness of curriculum and syllabus content for placement/ higher education. (Related to curriculum)	79	32	4	0	0
2	Rate the effectiveness of the academic curriculum for the development of analytical and problem-solving skills (Related to curriculum)	69	43	3	0	0
3	Rate the curriculum and institution activities for making the students industry ready at the end of the programme (Related to curriculum)	73	35	7	0	0
4	Rate the curriculum for the improvement of creative thinking skills and knowledge / scope of the syllabus in enhancing entrepreneurship skills/ lifelong learning/ human values and ethics. (Related to Academic Performance)	73	38	4	0	0
5	Rate the faculty and the teaching learning process in the department and institution (Related to curriculum and academic performance)	72	38	5	0	0



PRINCE SHRI VENKATESWARA ARTS AND SCIENCE COLLEGE

Gowrivakkam, Chennai-600073.

Affiliated to University of Madras, ISO 9001:2015 Certified Institution

6	Rate the placement opportunities and career guidance programs provided by the Placement Cell (Related to academic performance)	70	39	5	0	1
7	Rate the laboratory facilities and the laboratory course experiments relevancy to real time applications (Related to infrastructure and ambience of the institution)	73	38	4	0	0
8	Rate the adequacy of library and research Centre facilities (Related to infrastructure of the institution)	78	34	3	0	0
9	Rate the sports and cultural facilities and the related activities by the institution (Related to infrastructure and ambience of the institution)	72	35	8	0	0
10	Rate the opportunities provided by the institute to participate in co-curricular and extracurricular activities (Related to ambience of the institution)	79	32	3	1	0
11	Rate the conducive and peaceful overall environment provided by the institution (Related to ambience of the institution)	73	38	4	0	0



B. Kalpana
PRINCIPAL
PRINCE SHRI VENKATESHWARA
ARTS AND SCIENCE COLLEGE
GOWRIVAKKAM, CHENNAI-600 073.



PRINCE SHRI VENKATESWARA ARTS AND SCIENCE COLLEGE

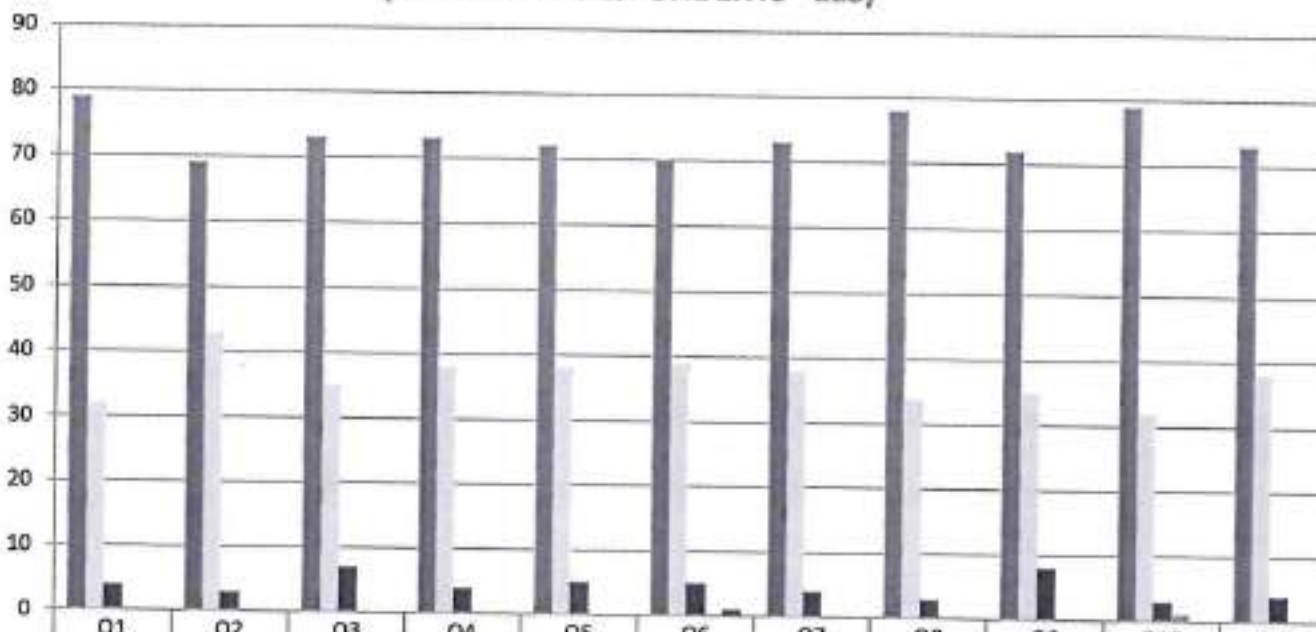
Gowrivakkam, Chennai-600073.

Affiliated to University of Madras. ISO 9001:2015 Certified Institution

**ALUMNI FEEDBACK ON CURRICULUM, INFRASTRUCTURE
FACILITIES & AMBIENCE OF THE INSTITUTION - 2019-2020**

B.COM (GENERAL)

(NUMBER OF RESPONDENTS - 115)



	Q1	Q2	Q3	Q4	Q5	Q6	Q7	Q8	Q9	Q10	Q11
Strongly Agree (5)	79	69	73	73	72	70	73	78	72	79	73
Agree (4)	32	43	35	38	38	39	38	34	35	32	38
Neutral (3)	4	3	7	4	5	5	4	3	8	3	4
Disagree (2)	0	0	0	0	0	0	0	0	0	0	0
Strongly Disagree (1)	0	0	0	0	0	1	0	0	0	0	0



B. Kalpana
PRINCIPAL

**PRINCE SHRI VENKATESHWARA
ARTS AND SCIENCE COLLEGE**
GOWRIVAKKAM, CHENNAI-600 073.



PRINCE SHRI VENKATESWARA ARTS AND SCIENCE COLLEGE

Gowrivakkam, Chennai-600073.

Affiliated to University of Madras, ISO 9001:2015 Certified Institution

ALUMNI FEEDBACK ON CURRICULUM, INFRASTRUCTURE FACILITIES & AMBIENCE OF THE INSTITUTION – ANALYSIS REPORT

Academic Year 2019-20
Department BCA
Number of Respondents 154

Feedback Rate: Strongly Agree (5), Agree (4), Neutral (3), Disagree (2), Strongly Disagree (1)

S. No	Feedback on Curriculum, infrastructure facilities & ambience of the institution	5	4	3	2	1
1	Rate the appropriateness of curriculum and syllabus content for placement/ higher education. (Related to curriculum)	108	39	7	0	0
2	Rate the effectiveness of the academic curriculum for the development of analytical and problem-solving skills (Related to curriculum)	98	50	6	0	0
3	Rate the curriculum and institution activities for making the students industry ready at the end of the programme (Related to curriculum)	102	42	10	0	0
4	Rate the curriculum for the improvement of creative thinking skills and knowledge / scope of the syllabus in enhancing entrepreneurship skills/ lifelong learning/ human values and ethics. (Related to Academic Performance)	102	45	7	0	0



PRINCE SHRI VENKATESWARA ARTS AND SCIENCE COLLEGE

Gowrivakkam, Chennai-600073.

Affiliated to University of Madras, ISO 9001:2015 Certified Institution.

5	Rate the faculty and the teaching learning process in the department and institution (Related to curriculum and academic performance)	101	45	8	0	0
6	Rate the placement opportunities and career guidance programs provided by the Placement Cell (Related to academic performance)	99	46	8	0	1
7	Rate the laboratory facilities and the laboratory course experiments relevancy to real time applications (Related to infrastructure and ambience of the institution)	102	45	7	0	0
8	Rate the adequacy of library and research Centre facilities (Related to infrastructure of the institution)	107	41	6	0	0
9	Rate the sports and cultural facilities and the related activities by the institution (Related to infrastructure and ambience of the institution)	101	42	11	0	0
10	Rate the opportunities provided by the institute to participate in co-curricular and extracurricular activities (Related to ambience of the institution)	108	39	6	1	0
11	Rate the conducive and peaceful overall environment provided by the institution (Related to ambience of the institution)	102	45	7	0	0



B. Kalpana
PRINCIPAL
PRINCE SHRI VENKATESHWARA
ARTS AND SCIENCE COLLEGE
GOWRIVAKKAM, CHENNAI-600 073.



PRINCE SHRI VENKATESWARA ARTS AND SCIENCE COLLEGE

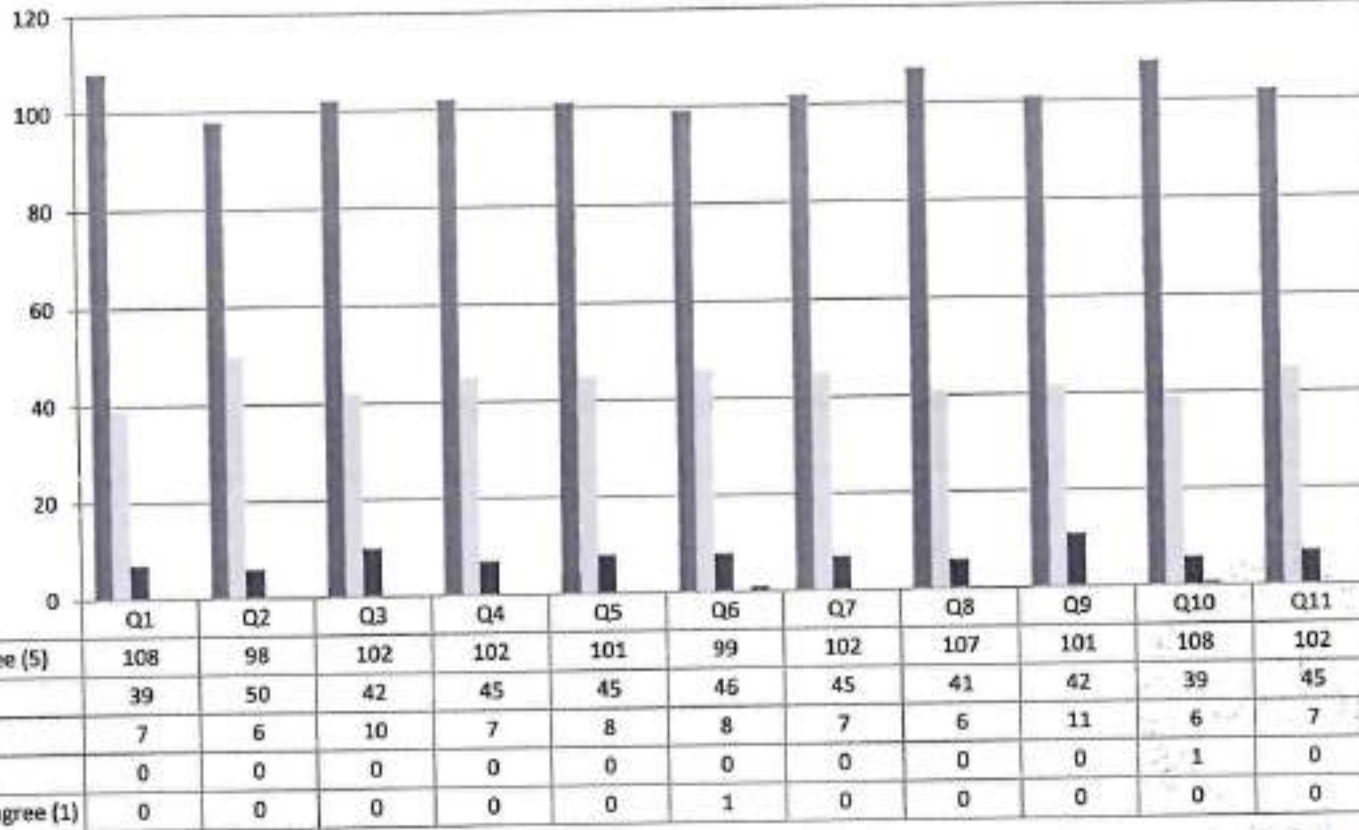
Gowrivaikam, Chennai-600073.

Affiliated to University of Madras, ISO 9001:2015 Certified Institution

ALUMNI FEEDBACK ON CURRICULUM, INFRASTRUCTURE FACILITIES & AMBIENCE OF THE INSTITUTION - 2019-2020

BCA

(NUMBER OF RESPONDENTS - 154)



B. Kalpana

PRINCIPAL

PRINCE SHRI VENKATESHWARA
ARTS AND SCIENCE COLLEGE
GOWRIVAKKAM CHENNAI-600 073.



PRINCE SHRI VENKATESWARA ARTS AND SCIENCE COLLEGE

Gowrivakkam, Chennai-600073.

Affiliated to University of Madras, ISO 9001:2015 Certified Institution

**ALUMNI FEEDBACK ON CURRICULUM, INFRASTRUCTURE FACILITIES & AMBIENCE OF THE INSTITUTION
- ANALYSIS REPORT**

Academic Year 2019-20
Department B.Sc.-Biotechnology
Number of Respondents 56

Feedback Rate: Strongly Agree (5), Agree (4), Neutral (3), Disagree (2), Strongly Disagree (1)

S. No	Feedback on Curriculum, infrastructure facilities & ambience of the institution	5	4	3	2	1
1	Rate the appropriateness of curriculum and syllabus content for placement/ higher education. (Related to curriculum)	32	17	7	0	0
2	Rate the effectiveness of the academic curriculum for the development of analytical and problem-solving skills (Related to curriculum)	32	17	6	0	1
3	Rate the curriculum and institution activities for making the students industry ready at the end of the programme (Related to curriculum)	33	16	6	1	0
4	Rate the curriculum for the improvement of creative thinking skills and knowledge / scope of the syllabus in enhancing entrepreneurship skills/ lifelong learning/ human values and ethics. (Related to Academic Performance)	33	15	8	0	0
5	Rate the faculty and the teaching learning process in the department and institution (Related to curriculum and academic performance)	36	13	7	0	0



PRINCE SHRI VENKATESWARA ARTS AND SCIENCE COLLEGE

Gowrivakkam, Chennai-600073.

Affiliated to University of Madras, ISO 9001:2015 Certified Institution

6	Rate the placement opportunities and career guidance programs provided by the Placement Cell (Related to academic performance)	32	18	6	0	0
7	Rate the laboratory facilities and the laboratory course experiments relevancy to real time applications (Related to infrastructure and ambience of the institution)	32	18	6	0	0
8	Rate the adequacy of library and research Centre facilities (Related to infrastructure of the institution)	32	17	7	0	0
9	Rate the sports and cultural facilities and the related activities by the institution (Related to infrastructure and ambience of the institution)	30	17	9	0	0
10	Rate the opportunities provided by the institute to participate in co-curricular and extracurricular activities (Related to ambience of the institution)	35	13	6	1	1
11	Rate the conducive and peaceful overall environment provided by the institution (Related to ambience of the institution)	32	18	6	0	0



B. Kalpana
PRINCIPAL
PRINCE SHRI VENKATESHWARA
ARTS AND SCIENCE COLLEGE
GOWRIVAKKAM, CHENNAI-600 073.



PRINCE SHRI VENKATESWARA ARTS AND SCIENCE COLLEGE

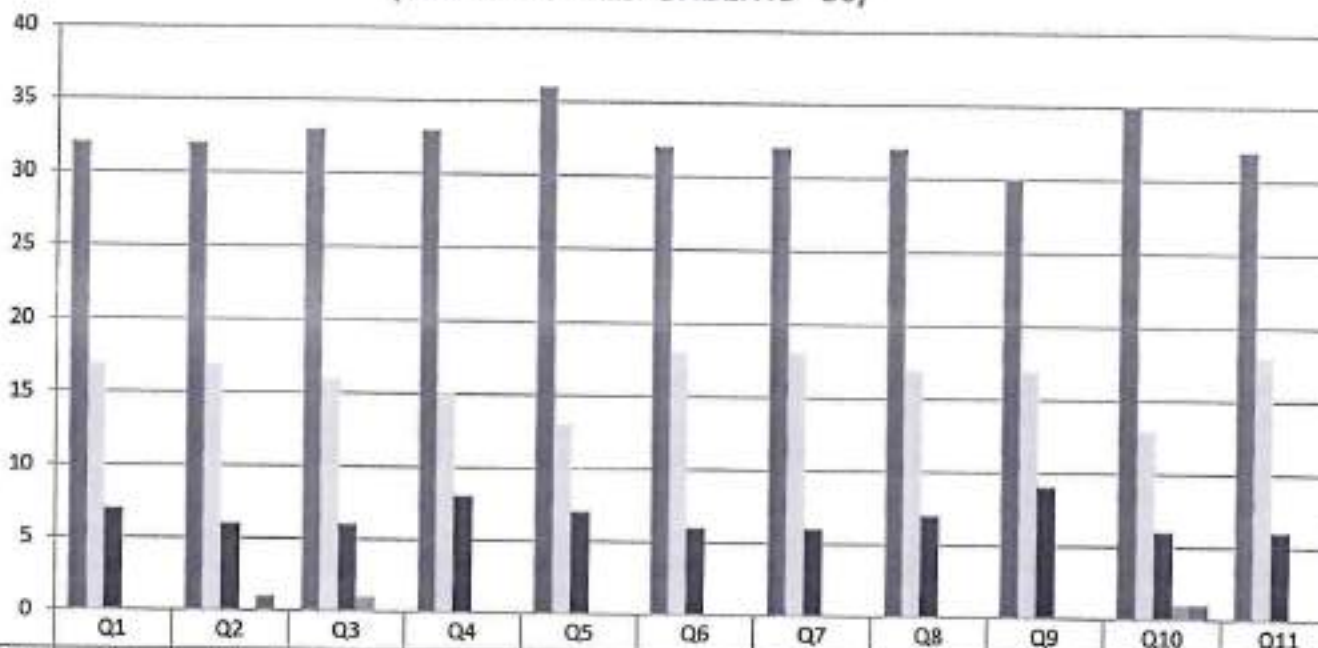
Gowrivakkam, Chennai-600073

Affiliated to University of Madras, ISO 9001:2015 Certified Institution

ALUMNI FEEDBACK ON CURRICULUM, INFRASTRUCTURE FACILITIES & AMBIENCE OF THE INSTITUTION - 2019-2020

B.Sc. BIOTECHNOLOGY

(NUMBER OF RESPONDENTS - 56)



B. Kalpana
PRINCIPAL

PRINCE SHRI VENKATESHWARA
ARTS AND SCIENCE COLLEGE



PRINCE SHRI VENKATESWARA ARTS AND SCIENCE COLLEGE

Gowrivakkam, Chennai-600073

Affiliated to University of Madras, ISO 9001:2015 Certified Institution

ALUMNI FEEDBACK ON CURRICULUM, INFRASTRUCTURE FACILITIES & AMBIENCE OF THE INSTITUTION – ANALYSIS REPORT

Academic Year

2019-20

Department

B. Com - Accounting and Finance

Number of Respondents

45

Feedback Rate: Strongly Agree (5), Agree (4), Neutral (3), Disagree (2), Strongly Disagree (1)

S. No	Feedback on Curriculum, infrastructure facilities & ambience of the institution	5	4	3	2	1
1	Rate the appropriateness of curriculum and syllabus content for placement/ higher education. (Related to curriculum)	28	10	7	0	0
2	Rate the effectiveness of the academic curriculum for the development of analytical and problem-solving skills (Related to curriculum)	28	10	6	0	1
3	Rate the curriculum and institution activities for making the students industry ready at the end of the programme (Related to curriculum)	29	9	6	1	0
4	Rate the curriculum for the improvement of creative thinking skills and knowledge / scope of the syllabus in enhancing entrepreneurship skills/ lifelong learning/ human values and ethics. (Related to Academic Performance)	29	8	8	0	0
5	Rate the faculty and the teaching learning process in the department and institution (Related to curriculum and academic performance)	32	6	7	0	0



PRINCE SHRI VENKATESWARA ARTS AND SCIENCE COLLEGE

Gowrivakkam, Chennai-600073

Affiliated to University of Madras, ISO 9001:2015 Certified Institution

6	Rate the placement opportunities and career guidance programs provided by the Placement Cell (Related to academic performance)	28	11	6	0	0
7	Rate the laboratory facilities and the laboratory course experiments relevancy to real time applications (Related to infrastructure and ambience of the institution)	28	11	6	0	0
8	Rate the adequacy of library and research Centre facilities (Related to infrastructure of the institution)	28	10	7	0	0
9	Rate the sports and cultural facilities and the related activities by the institution (Related to infrastructure and ambience of the institution)	26	10	9	0	0
10	Rate the opportunities provided by the institute to participate in co-curricular and extracurricular activities (Related to ambience of the institution)	31	6	6	1	1
11	Rate the conducive and peaceful overall environment provided by the institution (Related to ambience of the institution)	28	11	6	0	0



B. Kalpana
PRINCIPAL
PRINCE SHRI VENKATESHWARA
ARTS AND SCIENCE COLLEGE
GOWRIVAKKAM, CHENNAI-600 073.

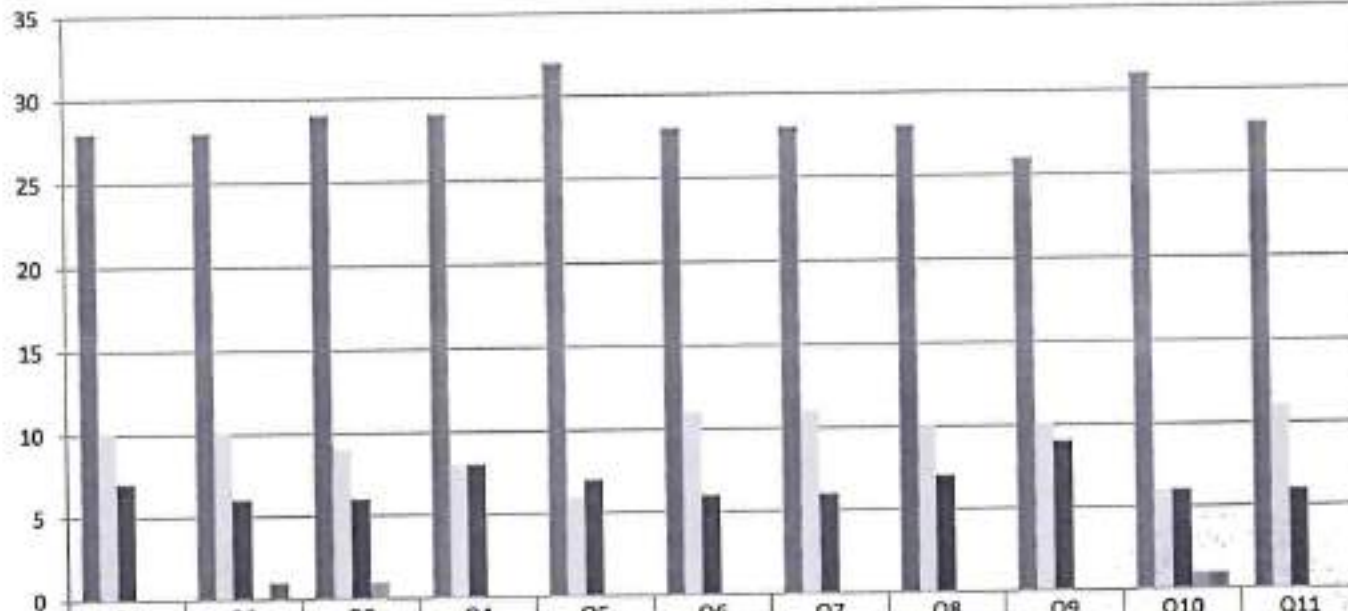


PRINCE SHRI VENKATESWARA ARTS AND SCIENCE COLLEGE

Gowrivaikam, Chennai-600073

Affiliated to University of Madras, ISO 9001:2015 Certified Institution

**ALUMNI FEEDBACK ON CURRICULUM, INFRASTRUCTURE
FACILITIES & AMBIENCE OF THE INSTITUTION - 2019-2020
B.COM (ACCOUNTING AND FINANCE)
(NUMBER OF RESPONDENTS - 45)**



	Q1	Q2	Q3	Q4	Q5	Q6	Q7	Q8	Q9	Q10	Q11
Strongly Agree (5)	28	28	29	29	32	28	28	28	26	31	28
Agree (4)	10	10	9	8	6	11	11	10	10	6	11
Neutral (3)	7	6	6	8	7	6	6	7	9	6	6
Disagree (2)	0	0	1	0	0	0	0	0	0	1	0
Strongly Disagree (1)	0	1	0	0	0	0	0	0	0	1	0



B. Kalpana
PRINCIPAL

**PRINCE SHRI VENKATESHWARA
ARTS AND SCIENCE COLLEGE
GOWRIVAKKAM CHENNAI-600 073**



PRINCE SHRI VENKATESWARA ARTS AND SCIENCE COLLEGE

Gowrivakkam, Chennai-600073.

Affiliated to University of Madras, ISO 9001:2015 Certified Institution

ALUMNI FEEDBACK ON CURRICULUM, INFRASTRUCTURE FACILITIES & AMBIENCE OF THE INSTITUTION – ANALYSIS REPORT

Academic Year 2019-20
Department B.A. English
Number of Respondents 30

Feedback Rate: Strongly Agree (5), Agree (4), Neutral (3), Disagree (2), Strongly Disagree (1)

S. No	Feedback on Curriculum, infrastructure facilities & ambience of the institution	5	4	3	2	1
1	Rate the appropriateness of curriculum and syllabus content for placement/ higher education. (Related to curriculum)	19	8	2	0	1
2	Rate the effectiveness of the academic curriculum for the development of analytical and problem-solving skills (Related to curriculum)	17	11	2	0	0
3	Rate the curriculum and institution activities for making the students industry ready at the end of the programme (Related to curriculum)	20	7	3	0	0
4	Rate the curriculum for the improvement of creative thinking skills and knowledge / scope of the syllabus in enhancing entrepreneurship skills/ lifelong learning/ human values and ethics. (Related to Academic Performance)	23	4	3	0	0
5	Rate the faculty and the teaching learning process in the department and institution (Related to curriculum and academic performance)	18	9	2	1	0



PRINCE SHRI VENKATESWARA ARTS AND SCIENCE COLLEGE

Gowrivaldam, Chennai-600073.

Affiliated to University of Madras. ISO 9001:2015 Certified Institution

6	Rate the placement opportunities and career guidance programs provided by the Placement Cell (Related to academic performance)	20	7	2	1	0
7	Rate the laboratory facilities and the laboratory course experiments relevancy to real time applications (Related to infrastructure and ambience of the institution)	18	10	2	0	0
8	Rate the adequacy of library and research Centre facilities (Related to infrastructure of the institution)	19	8	3	0	0
9	Rate the sports and cultural facilities and the related activities by the institution (Related to infrastructure and ambience of the institution)	20	8	1	1	0
10	Rate the opportunities provided by the institute to participate in co-curricular and extracurricular activities (Related to ambience of the institution)	23	5	1	0	1
11	Rate the conducive and peaceful overall environment provided by the institution (Related to ambience of the institution)	18	10	2	0	0



B. Kalpana
PRINCIPAL
PRINCE SHRI VENKATESHWARA
ARTS AND SCIENCE COLLEGE
GOWRIVAKKAM, CHENNAI-600 073.



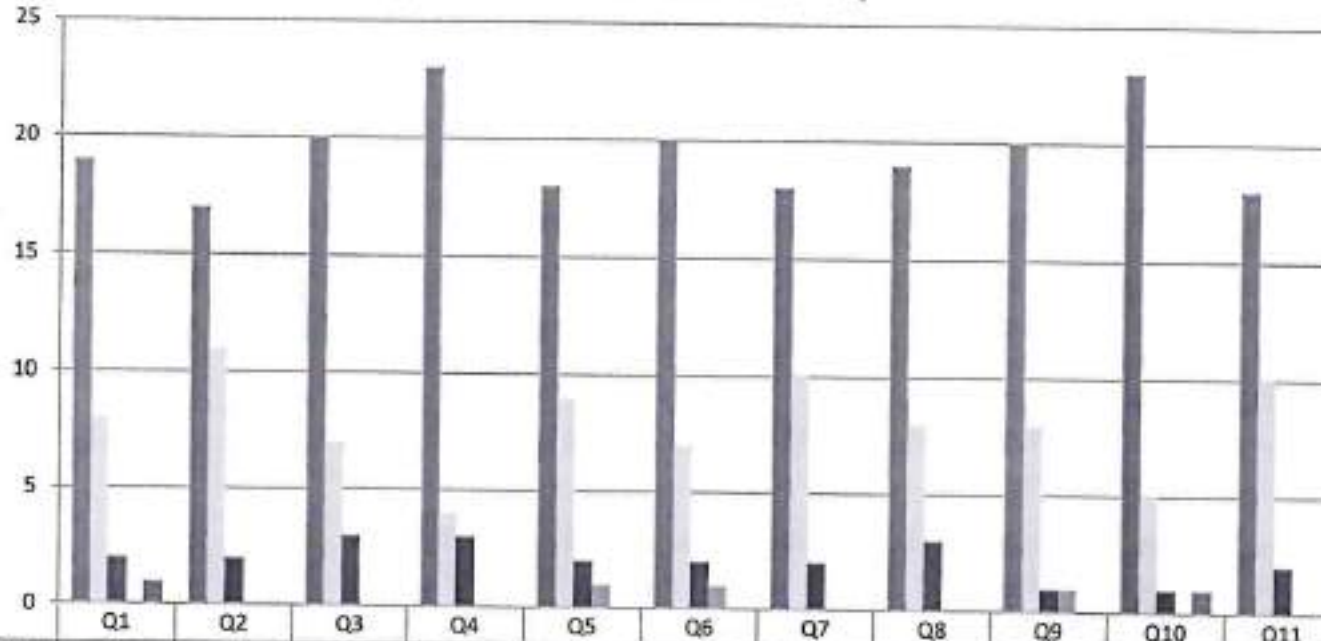
PRINCE SHRI VENKATESWARA ARTS AND SCIENCE COLLEGE

Gowrivakkam, Chennai-600073.

Affiliated to University of Madras, ISO 9001:2015 Certified Institution

**ALUMNI FEEDBACK ON CURRICULUM, INFRASTRUCTURE
FACILITIES & AMBIENCE OF THE INSTITUTION - 2019-2020
B.A. ENGLISH**

(NUMBER OF RESPONDENTS - 30)



B. Kalpana
PRINCIPAL

**PRINCE SHRI VENKATESHWARA
ARTS AND SCIENCE COLLEGE**



PRINCE SHRI VENKATESWARA ARTS AND SCIENCE COLLEGE

Gowrivakkam, Chennai-600073.

Affiliated to University of Madras, ISO 9001:2015 Certified Institution

ALUMNI FEEDBACK ON CURRICULUM, INFRASTRUCTURE FACILITIES & AMBIENCE OF THE INSTITUTION – ANALYSIS REPORT

Academic Year

2019-20

Department

M.Sc. Microbiology

Number of Respondents

15

Feedback Rate: Strongly Agree (5), Agree (4), Neutral (3), Disagree (2), Strongly Disagree (1)

S. No	Feedback on Curriculum, infrastructure facilities & ambience of the institution	5	4	3	2	1
1	Rate the appropriateness of curriculum and syllabus content for placement/ higher education. (Related to curriculum)	11	3	0	1	0
2	Rate the effectiveness of the academic curriculum for the development of analytical and problem-solving skills (Related to curriculum)	10	5	0	0	0
3	Rate the curriculum and institution activities for making the students industry ready at the end of the programme (Related to curriculum)	8	5	2	0	0
4	Rate the curriculum for the improvement of creative thinking skills and knowledge / scope of the syllabus in enhancing entrepreneurship skills/ lifelong learning/ human values and ethics. (Related to Academic Performance)	12	3	0	0	0
5	Rate the faculty and the teaching learning process in the department and institution (Related to curriculum and academic performance)	12	2	1	0	0



PRINCE SHRI VENKATESWARA ARTS AND SCIENCE COLLEGE

Gowrivakkam, Chennai-600073

Affiliated to University of Madras, ISO 9001:2015 Certified Institution.

6	Rate the placement opportunities and career guidance programs provided by the Placement Cell (Related to academic performance)	7	6	2	0	0
7	Rate the laboratory facilities and the laboratory course experiments relevancy to real time applications (Related to infrastructure and ambience of the institution)	10	4	1	0	0
8	Rate the adequacy of library and research Centre facilities (Related to infrastructure of the institution)	13	2	0	0	0
9	Rate the sports and cultural facilities and the related activities by the institution (Related to infrastructure and ambience of the institution)	11	4	0	0	0
10	Rate the opportunities provided by the institute to participate in co-curricular and extracurricular activities (Related to ambience of the institution)	11	3	1	0	0
11	Rate the conducive and peaceful overall environment provided by the institution (Related to ambience of the institution)	10	5	0	0	0



B. Kalpana
PRINCIPAL
PRINCE SHRI VENKATESHWARA
ARTS AND SCIENCE COLLEGE
GOWRIVAKKAM, CHENNAI-600 073.



PRINCE SHRI VENKATESWARA ARTS AND SCIENCE COLLEGE

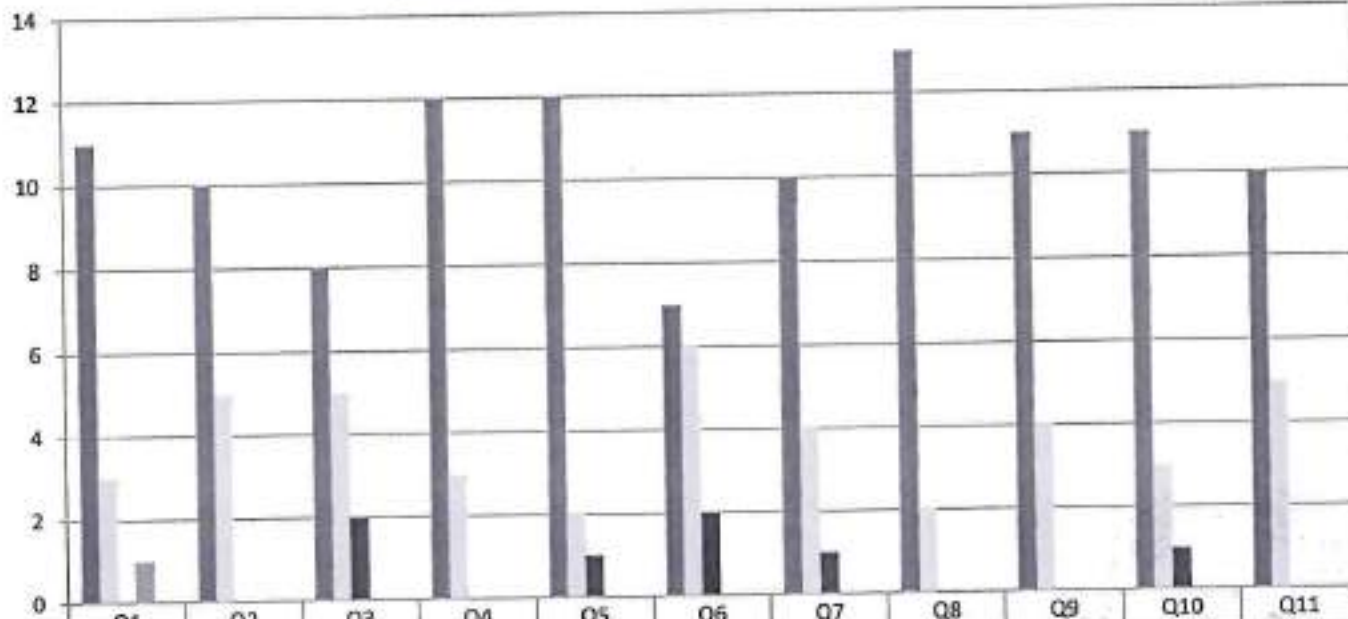
Gowrivakkam, Chennai-600073.

Affiliated to University of Madras, ISO 9001:2015 Certified Institution

ALUMNI FEEDBACK ON CURRICULUM, INFRASTRUCTURE FACILITIES & AMBIENCE OF THE INSTITUTION - 2019-2020

M.Sc. MICROBIOLOGY

(NUMBER OF RESPONDENTS - 15)



	Q1	Q2	Q3	Q4	Q5	Q6	Q7	Q8	Q9	Q10	Q11
Strongly Agree (5)	11	10	8	12	12	7	10	13	11	11	10
Agree (4)	3	5	5	3	2	6	4	2	4	3	5
Neutral (3)	0	0	2	0	1	2	1	0	0	1	0
Disagree (2)	1	0	0	0	0	0	0	0	0	0	0
Strongly Disagree (1)	0	0	0	0	0	0	0	0	0	0	0



B. Kalpana
PRINCIPAL
 PRINCE SHRI VENKATESHWARA
 ARTS AND SCIENCE COLLEGE
 CHENNAI - 600 073



PRINCE SHRI VENKATESWARA ARTS AND SCIENCE COLLEGE

Gowrivaklam, Chennai-600073.

Affiliated to University of Madras, ISO 9001:2015 Certified Institution

ALUMNI FEEDBACK ON CURRICULUM, INFRASTRUCTURE FACILITIES & AMBIENCE OF THE INSTITUTION – ANALYSIS REPORT

Academic Year 2019-20
Department M.Sc. Computer Science
Number of Respondents 13

Feedback Rate: Strongly Agree (5), Agree (4), Neutral (3), Disagree (2), Strongly Disagree (1)

S. No	Feedback on Curriculum, infrastructure facilities & ambience of the institution	5	4	3	2	1
1	Rate the appropriateness of curriculum and syllabus content for placement/ higher education. (Related to curriculum)	10	1	1	1	0
2	Rate the effectiveness of the academic curriculum for the development of analytical and problem-solving skills (Related to curriculum)	9	3	1	0	0
3	Rate the curriculum and institution activities for making the students industry ready at the end of the programme (Related to curriculum)	7	4	2	0	0
4	Rate the curriculum for the improvement of creative thinking skills and knowledge / scope of the syllabus in enhancing entrepreneurship skills/ lifelong learning/ human values and ethics. (Related to Academic Performance)	11	2	0	0	0
5	Rate the faculty and the teaching learning process in the department and institution (Related to curriculum and academic performance)	10	1	2	0	0



PRINCE SHRI VENKATESWARA ARTS AND SCIENCE COLLEGE

Gowrivakkam, Chennai-600073.

Affiliated to University of Madras, ISO 9001:2015 Certified Institution

6	Rate the placement opportunities and career guidance programs provided by the Placement Cell (Related to academic performance)	6	4	3	0	0
7	Rate the laboratory facilities and the laboratory course experiments relevancy to real time applications (Related to infrastructure and ambience of the institution)	9	2	2	0	0
8	Rate the adequacy of library and research Centre facilities (Related to infrastructure of the institution)	11	1	1	0	0
9	Rate the sports and cultural facilities and the related activities by the institution (Related to infrastructure and ambience of the institution)	10	2	1	0	0
10	Rate the opportunities provided by the institute to participate in co-curricular and extracurricular activities (Related to ambience of the institution)	10	1	2	0	0
11	Rate the conducive and peaceful overall environment provided by the institution (Related to ambience of the institution)	9	3	1	0	0



B. Kalpana
PRINCIPAL
PRINCE SHRI VENKATESHWARA
ARTS AND SCIENCE COLLEGE
GOWRIVAKKAM, CHENNAI-600 073.



PRINCE SHRI VENKATESWARA ARTS AND SCIENCE COLLEGE

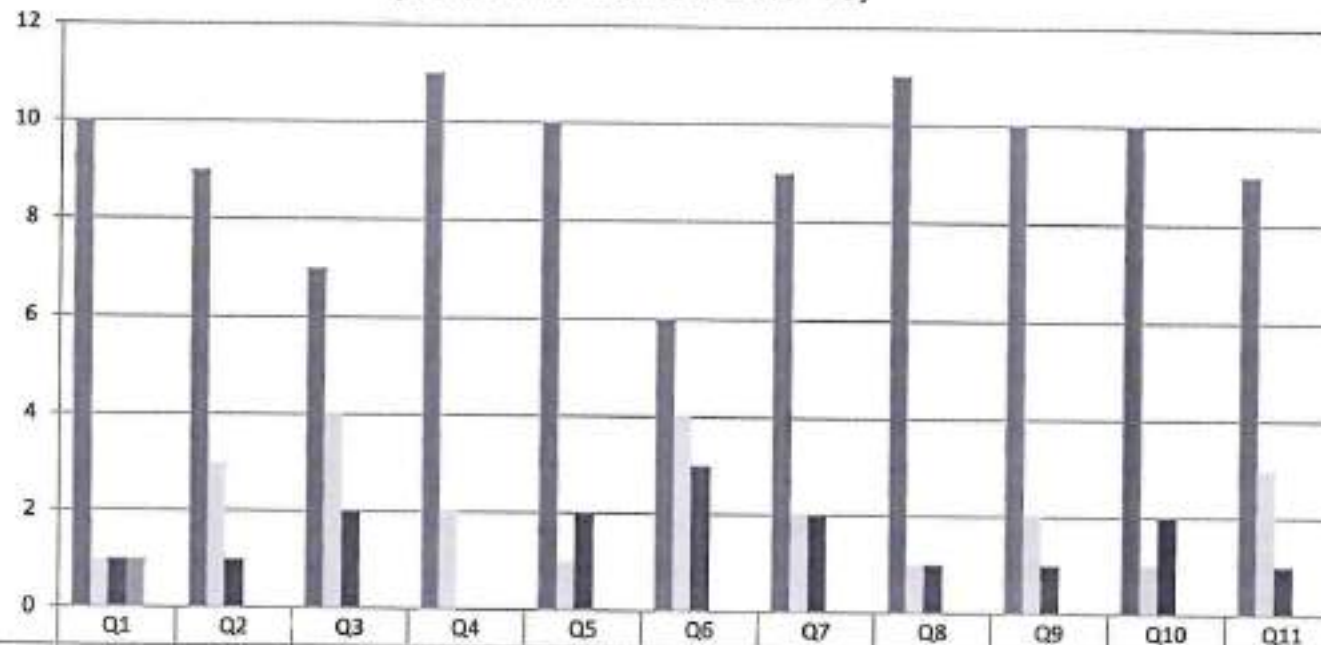
Gowrivakkam, Chennai-600073.

Affiliated to University of Madras, ISO 9001:2015 Certified Institution

**ALUMNI FEEDBACK ON CURRICULUM, INFRASTRUCTURE
FACILITIES & AMBIENCE OF THE INSTITUTION - 2019-2020**

M.Sc. COMPUTER SCIENCE

(NUMBER OF RESPONDENTS - 13)



■ Strongly Agree (5)
 ■ Agree (4)
 ■ Neutral (3)
 ■ Disagree (2)
 ■ Strongly Disagree (1)



B. Kalpana
PRINCIPAL

**PRINCE SHRI VENKATESHWARA
ARTS AND SCIENCE COLLEGE**



PRINCE SHRI VENKATESWARA ARTS AND SCIENCE COLLEGE

Gowrivaldkam, Chennai-600073

Affiliated to University of Madras, ISO 9001:2015 Certified Institution

ALUMNI FEEDBACK ON CURRICULUM, INFRASTRUCTURE FACILITIES & AMBIENCE OF THE INSTITUTION – ANALYSIS REPORT

Academic Year 2019-20
Department M.Sc. Biochemistry
Number of Respondents 14

Feedback Rate: Strongly Agree (5), Agree (4), Neutral (3), Disagree (2), Strongly Disagree (1)

S. No	Feedback on Curriculum, infrastructure facilities & ambience of the institution	5	4	3	2	1
1	Rate the appropriateness of curriculum and syllabus content for placement/ higher education. (Related to curriculum)	10	4	0	0	0
2	Rate the effectiveness of the academic curriculum for the development of analytical and problem-solving skills (Related to curriculum)	11	3	0	0	0
3	Rate the curriculum and institution activities for making the students industry ready at the end of the programme (Related to curriculum)	11	3	0	0	0
4	Rate the curriculum for the improvement of creative thinking skills and knowledge / scope of the syllabus in enhancing entrepreneurship skills/ lifelong learning/ human values and ethics. (Related to Academic Performance)	11	2	1	0	0
5	Rate the faculty and the teaching learning process in the department and institution (Related to curriculum and academic performance)	11	3	0	0	0



PRINCE SHRI VENKATESWARA ARTS AND SCIENCE COLLEGE

Gowrivakkam, Chennai-600073.

Affiliated to University of Madras, ISO 9001:2015 Certified Institution

6	Rate the placement opportunities and career guidance programs provided by the Placement Cell (Related to academic performance)	11	2	1	0	0
7	Rate the laboratory facilities and the laboratory course experiments relevancy to real time applications (Related to infrastructure and ambience of the institution)	12	2	0	0	0
8	Rate the adequacy of library and research Centre facilities (Related to infrastructure of the institution)	12	2	0	0	0
9	Rate the sports and cultural facilities and the related activities by the institution (Related to infrastructure and ambience of the institution)	10	4	0	0	0
10	Rate the opportunities provided by the institute to participate in co-curricular and extracurricular activities (Related to ambience of the institution)	11	3	0	0	0
11	Rate the conducive and peaceful overall environment provided by the institution (Related to ambience of the institution)	10	3	1	0	0



B. Kalpana
PRINCIPAL
PRINCE SHRI VENKATESHWARA
ARTS AND SCIENCE COLLEGE
GOWRIVAKKAM, CHENNAI-600 073.



PRINCE SHRI VENKATESWARA ARTS AND SCIENCE COLLEGE

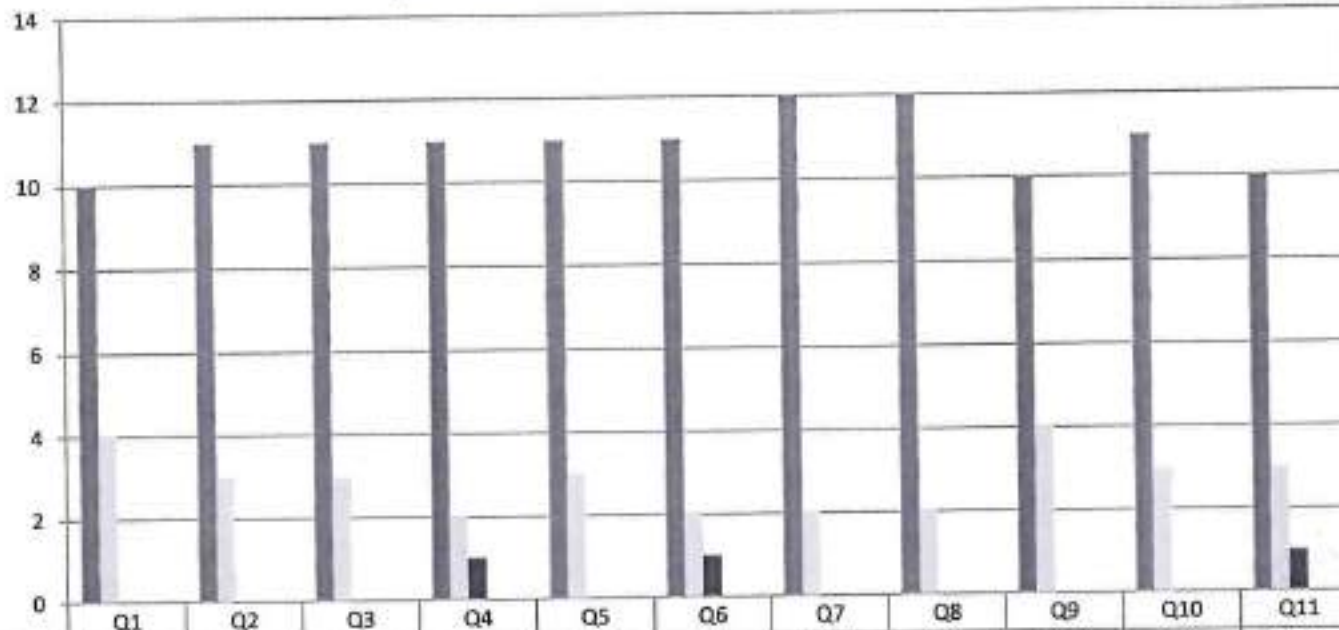
Gowrivakkam, Chennai-600073

Affiliated to University of Madras, ISO 9001:2015 Certified Institution

ALUMNI FEEDBACK ON CURRICULUM, INFRASTRUCTURE FACILITIES & AMBIENCE OF THE INSTITUTION - 2019-2020

M.Sc. BIOCHEMISTRY

(NUMBER OF RESPONDENTS - 14)



	Q1	Q2	Q3	Q4	Q5	Q6	Q7	Q8	Q9	Q10	Q11
Strongly Agree (5)	10	11	11	11	11	11	12	12	10	11	10
Agree (4)	4	3	3	2	3	2	2	2	4	3	3
Neutral (3)	0	0	0	1	0	1	0	0	0	0	1
Disagree (2)	0	0	0	0	0	0	0	0	0	0	0
Strongly Disagree (1)	0	0	0	0	0	0	0	0	0	0	0



P. Kalpana
PRINCIPAL
 PRINCE SHRI VENKATESHWARA
 ARTS AND SCIENCE COLLEGE
 CHENNAI-600 073



PRINCE SHRI VENKATESWARA ARTS AND SCIENCE COLLEGE

Gowrivaikam, Chennai-600073.

Affiliated to University of Madras, ISO 9001:2015 Certified Institution

ALUMNI FEEDBACK ON CURRICULUM, INFRASTRUCTURE FACILITIES & AMBIENCE OF THE INSTITUTION – ANALYSIS REPORT

Academic Year 2019-20
Department M.Sc. Biotechnology
Number of Respondents 13

Feedback Rate: Strongly Agree (5), Agree (4), Neutral (3), Disagree (2), Strongly Disagree (1)

S. No	Feedback on Curriculum, infrastructure facilities & ambience of the institution	5	4	3	2	1
1	Rate the appropriateness of curriculum and syllabus content for placement/ higher education. (Related to curriculum)	9	3	0	1	0
2	Rate the effectiveness of the academic curriculum for the development of analytical and problem-solving skills (Related to curriculum)	9	3	1	0	0
3	Rate the curriculum and institution activities for making the students industry ready at the end of the programme (Related to curriculum)	10	2	1	0	0
4	Rate the curriculum for the improvement of creative thinking skills and knowledge / scope of the syllabus in enhancing entrepreneurship skills/ lifelong learning/ human values and ethics. (Related to Academic Performance)	11	2	0	0	0
5	Rate the faculty and the teaching learning process in the department and institution (Related to curriculum and academic performance)	12	1	0	0	0



PRINCE SHRI VENKATESWARA ARTS AND SCIENCE COLLEGE

Gowrivakkam, Chennai-600073.

Affiliated to University of Madras, ISO 9001:2015 Certified Institution

6	Rate the placement opportunities and career guidance programs provided by the Placement Cell (Related to academic performance)	11	1	0	1	0
7	Rate the laboratory facilities and the laboratory course experiments relevancy to real time applications (Related to infrastructure and ambience of the institution)	10	3	0	0	0
8	Rate the adequacy of library and research Centre facilities (Related to infrastructure of the institution)	9	4	0	0	0
9	Rate the sports and cultural facilities and the related activities by the institution (Related to infrastructure and ambience of the institution)	10	2	1	0	0
10	Rate the opportunities provided by the institute to participate in co-curricular and extracurricular activities (Related to ambience of the institution)	10	1	1	1	0
11	Rate the conducive and peaceful overall environment provided by the institution (Related to ambience of the institution)	9	3	1	0	0



B. Kalpana
PRINCIPAL
PRINCE SHRI VENKATESHWARA
AND SCIENCE COLLEGE
VAKKAM, CHENNAI-600 073.



PRINCE SHRI VENKATESWARA ARTS AND SCIENCE COLLEGE

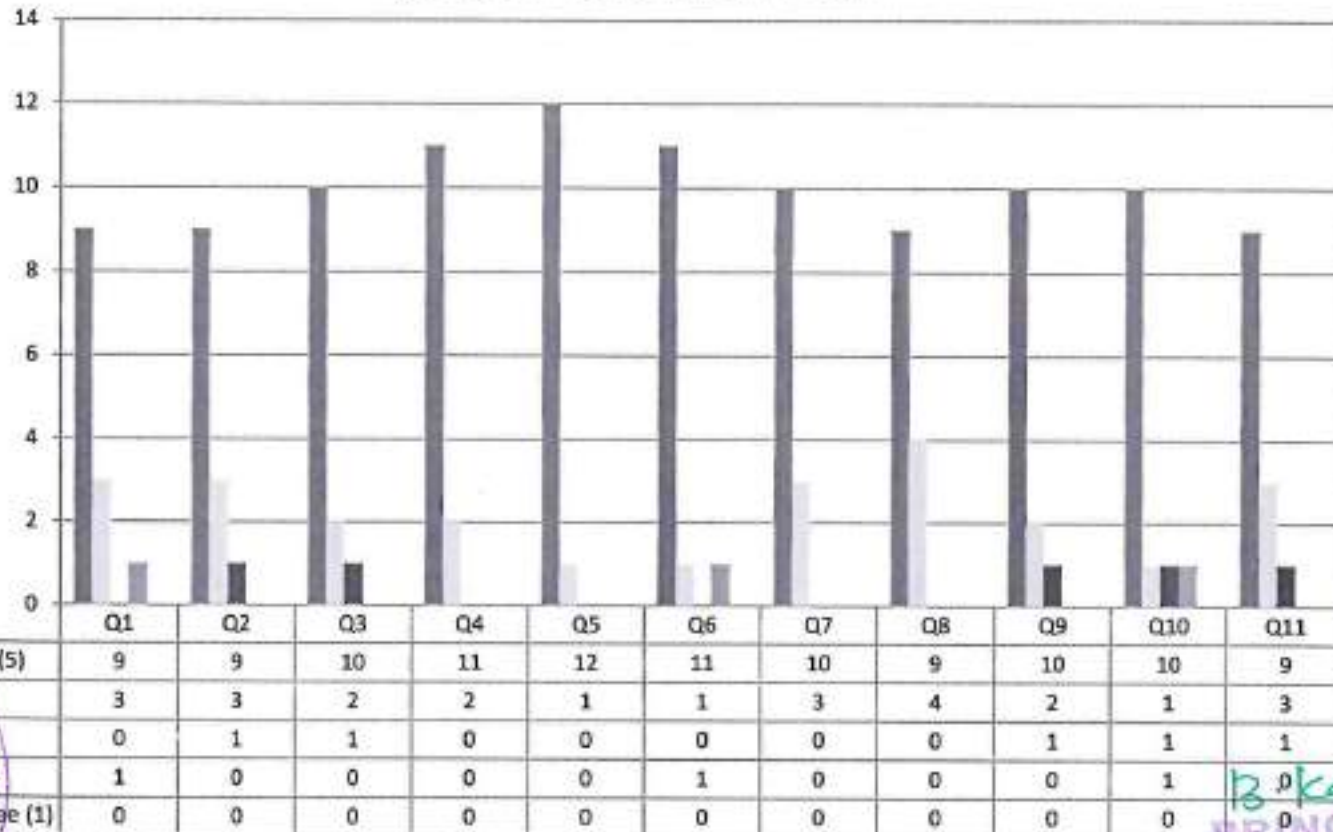
Gowrivakkam, Chennai-600073

Affiliated to University of Madras. ISO 9001:2015 Certified Institution

ALUMNI FEEDBACK ON CURRICULUM, INFRASTRUCTURE FACILITIES & AMBIENCE OF THE INSTITUTION - 2019-2020

M.Sc. BIOTECHNOLOGY

(NUMBER OF RESPONDENTS - 13)



B. Kalpana
PRINCIPAL

PRINCE SHRI VENKATESHWARA
ARTS AND SCIENCE COLLEGE
GOWRIVAKKAM, CHENNAI-600 073